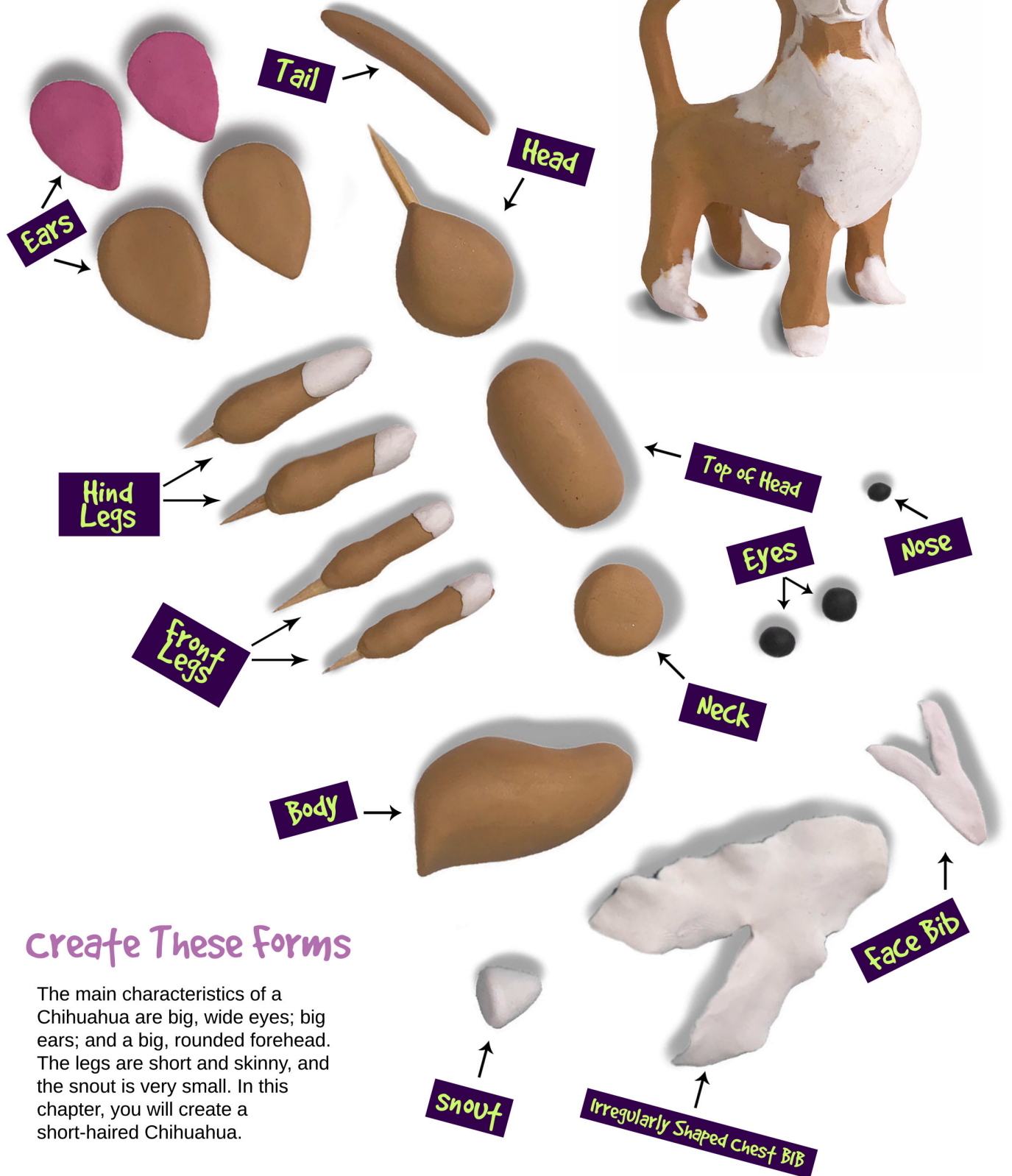
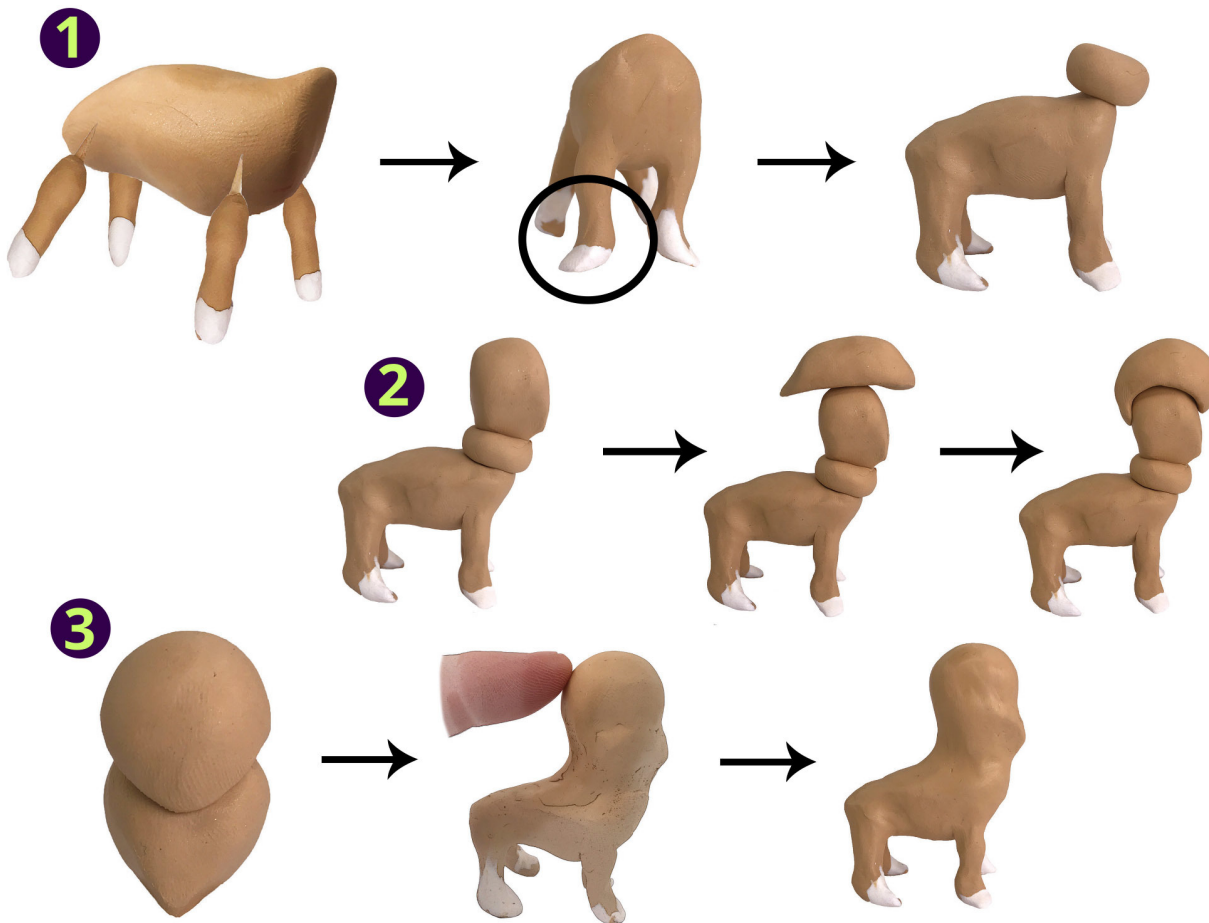


Chihuahua



Create These Forms

The main characteristics of a Chihuahua are big, wide eyes; big ears; and a big, rounded forehead. The legs are short and skinny, and the snout is very small. In this chapter, you will create a short-haired Chihuahua.



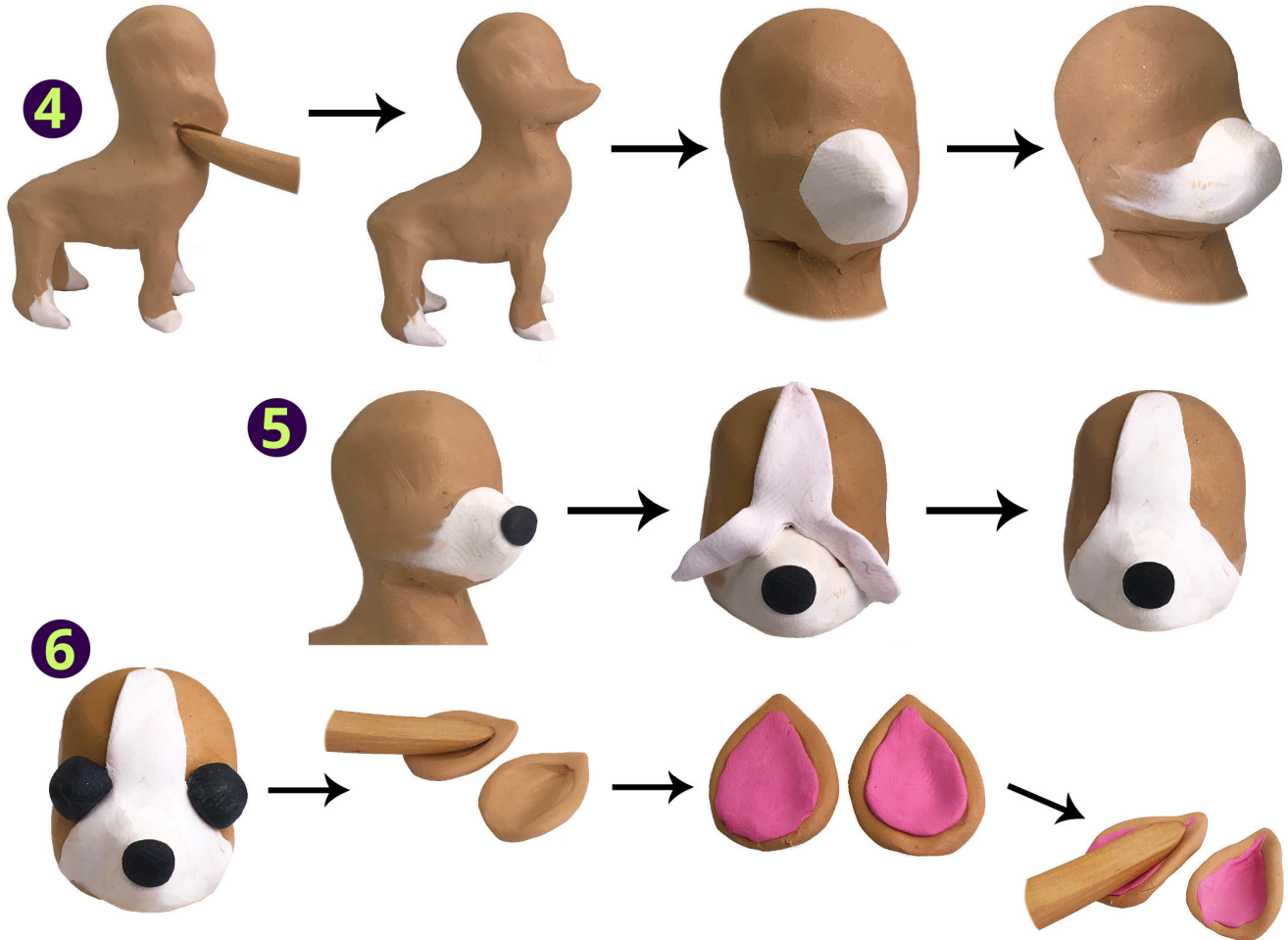
Connecting the Body Parts

Make the dog bow-legged with a big, bulging forehead.

Smear It!

- 1 Form the body and connect all four legs. Blend the connections, shape the legs in a bow-legged form, and point the paws away from each other. Add the neck clay.
- 2 Attach the head to the top of the neck, poking the toothpick through the neck clay. Attach the top of head clay and bend the front and back slightly downwards to follow the contours of the head.
- 3 The first image here shows a top-front view of the clay on top of the head. Blend the neck connection and the top of head connection to form a rounded head.

40

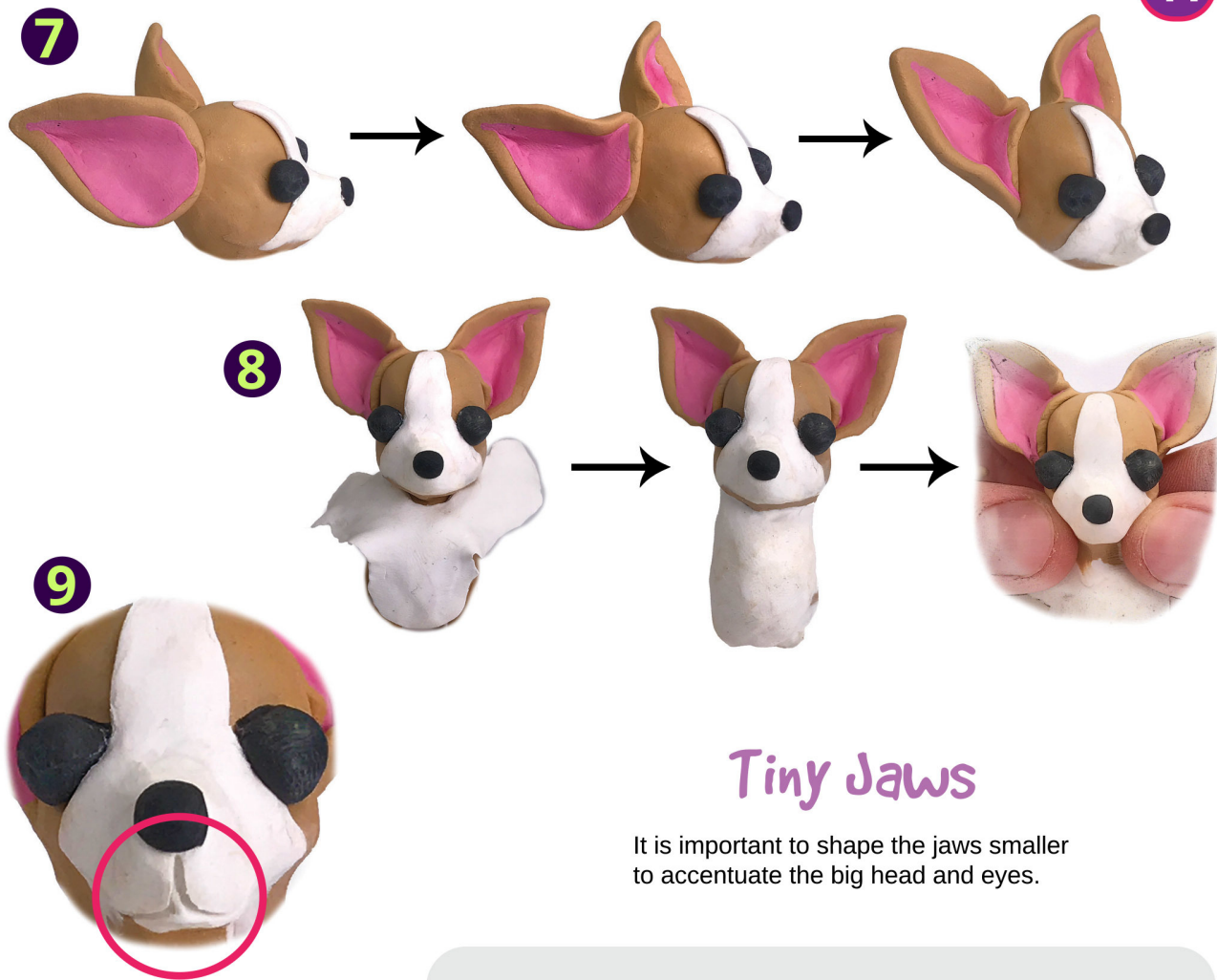


Big Ears, Big Eyes, Small Snout

The ears of a short-haired Chihuahua should be big, pointy, and erect. In a hairy Chihuahua, this positioning will not be so evident.



- 4** Use the tip of a modeling tool at the front of the neck to separate the chest from the snout, and then mold the snout into a pointed form. Attach the white snout clay and smear the sides backwards. Shape the snout to point slightly upwards.
- 5** Add the nose. Attach the face bib to the top of the snout and press slightly to flatten the clay. Smearing is not necessary at this time.
- 6** Add the eyes. Using a modeling tool, press into each ear to create a space for the pink clay. Attach the pink clay. Further flatten and concave the ears with the modeling tool to help thin both of the ears.



Tiny Jaws

It is important to shape the jaws smaller to accentuate the big head and eyes.

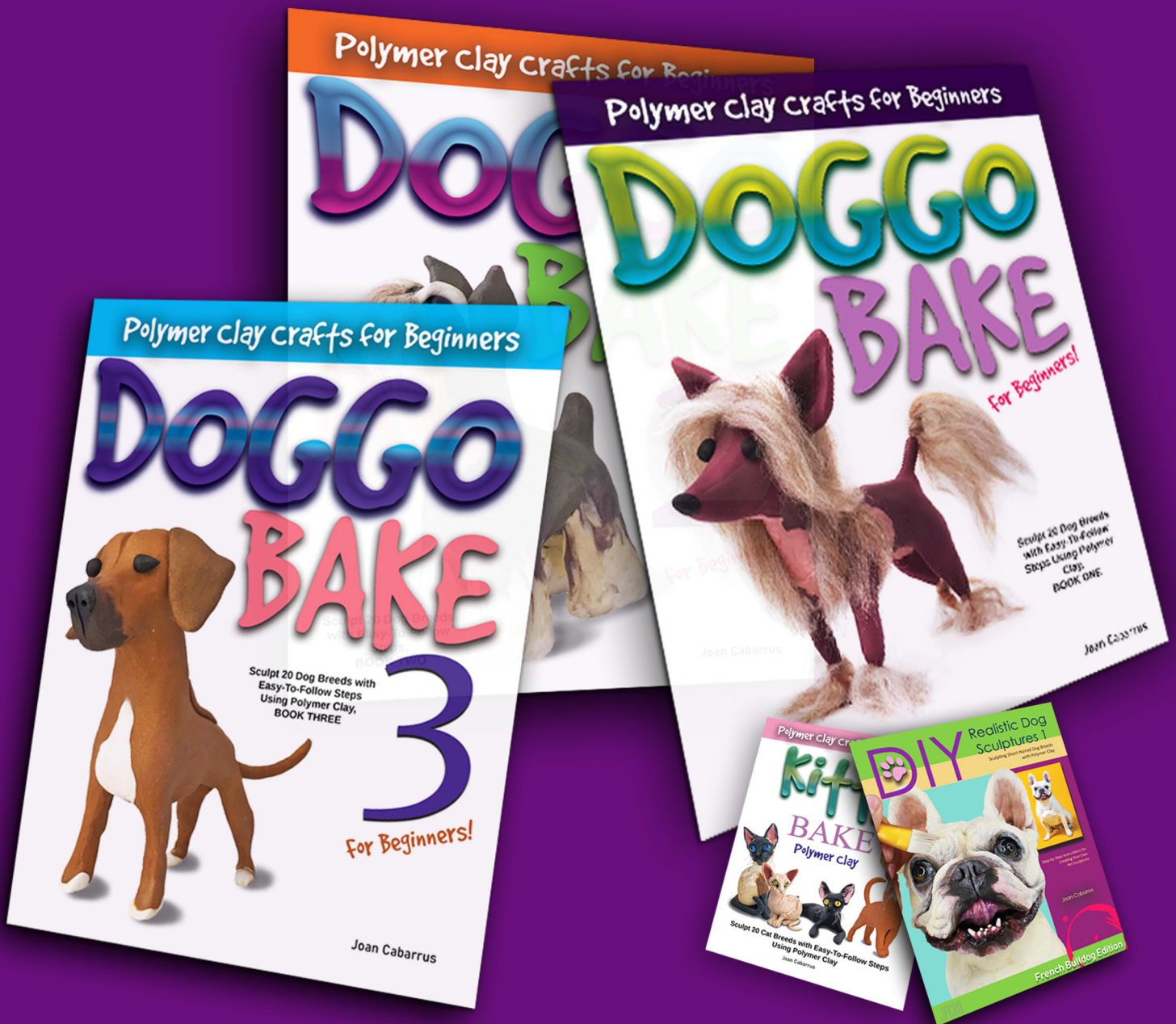


- 7** Place the ears pointing back and diagonal. Slightly press the top part of the ears that are closer to the top of the head and slightly press the the bottom part of the ears upwards to create a dome.
- 8** Add the chest bib clay to the chest, wrapping the clay around the neck and blending the sides to cover the entire chest and neck. Press both sides of the jaw with your thumbs to create a smaller jaw size.
- 9** Using a toothpick, score the front of the snout, starting just below the nose and moving downwards to create an upside-down "Y". Bake the piece at 250° F for 30 minutes.

Did you enjoy this fun tutorial?

Create more projects like this with all our sculpting book tutorials!

Purchase our book bundles or kits here.
Purchase individual books on our Amazon Store.



Disclaimer

All rights reserved. No part of this digital sculpting tutorial projects may be reproduced or used in any manner without written permission of the copyright owner except for the use of quotation in a product review.



Digital Sculpting Tutorial Projects by Joan Cabarrus
Copyright 2021 JFCRN Limited

The Artist-Author: Joan Cabarrus

Joan Cabarrus is an art entrepreneur, founder of the JFCRN Limited, DoggoBake Animal Sculptures e-commerce product line, a registered nurse, and "The Singing Sculptor" on YouTube. She authored and published several animal-related sculpting book tutorials as well as hosted and produced an entertaining show on Youtube called The Doggo Bake Show due to be published in 2021.

As a professional artist, her mission is to promote creativity, resourcefulness, and help cultivate compassion for animals through sculpting and creating art that is accessible to everyone. Her happiness in creating pieces of art lies in the critical thinking and problem solving she applies to the process, while practicing practicality and resourcefulness when creating them. She believes that by molding our mindsets to think courageously and practically it may eventually cultivate us to apply the same skills to bigger tasks in our daily lives.

Visit her Website: www.JFCRN.com



DOGGO[™]
BAKE

Digital Sculpting Tutorial Projects by Joan Cabarrus
Copyright 2021 JFCRN Limited